



WATERLOO HEALTHCARE

Better Carts for Better Outcomes

ER2000

The ER2000 is the most innovative and easily accessible emergency cart available today!

Specifically designed to take seconds off your emergency response time. Simple and easy to use, press the bright yellow "open" button located at the top center. When opened the ER2000 allows full access to all drawers and each drawer is labeled for rapid identification. The removable procedure trays can also be strategically deployed around the patient helping facilitate code response in tight quarters where a cart won't fit.

FEATURES

- Instant access – one touch breakaway seal opens for quick response
- Full extension see-thru removable & transportable drawer trays
- Adjustable door trays for additional flexible storage
- Recessed O2 tank bracket and cardiac board on side and rear of cart
- Available in Red or Blue



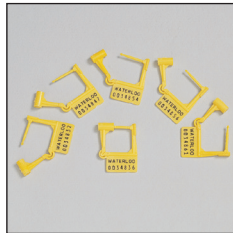
STANDARD ACCESSORIES



Utility Hooks
ABH-2



Cardiac Board/Bracket
CBB-ER



Plastic Breakaway Seals
PS-100



Oxygen Tank Bracket
O-2



IV Pole & Bracket
IV-2-ER



Drawer Labels
ER-LBL

DIMENSIONS

CART.....26"(w) x 33"(d) x 45"(h)

DRAWERS TRAYS:

(1-4).....15"(w) x 21"(d) x 2.5"(h)

(5).....15"(w) x 21"(d) x 5.5"(h)

DOOR BINS:

(4 each).....7.5"(w) x 2.9"(d) x 2.8"(h)

(2 each).....7.5"(w) x 5.6"(d) x 2.6"(h)