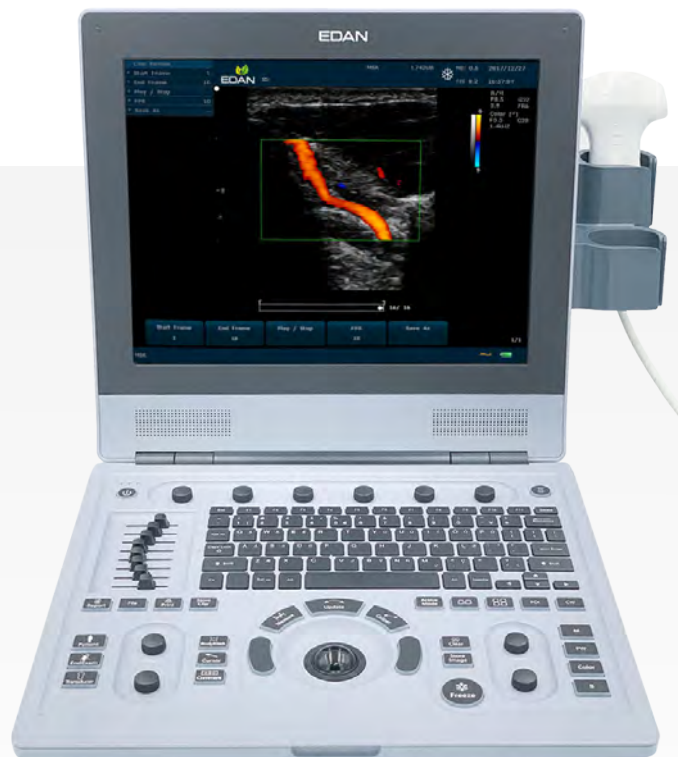


# U60

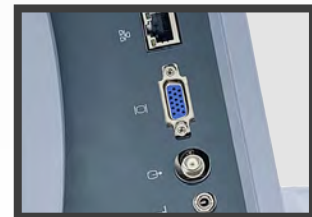
## Color Ultrasound



Dual Transducer Ports Allows 2 Transducers to Connect Simultaneously



Intuitive Control Panel for Easy Operation



Multiple Peripheral Ports Enable Easy Connectivity & Image Archiving

With its compact design, user-friendly operation and advanced imaging technologies, the U60 diagnostic ultrasound system offers a broad range of clinical applications to address all of your imaging needs.

## Features:

- High-resolution 15" monitor for easy viewing
- Battery operation of up to 60 minutes provides uninterrupted workflow
- Flexible image archiving solutions including storage to USB and DICOM
- Spatial Compounding Technology which utilizes multiple lines of sight to improve contrast resolution



**Imaging Modes:** B mode, M mode, Color Doppler, PDI/DPDI, PW Doppler, CW Doppler, HPRF (High Pulse Repetition Frequency)

**Applications:** Abdomen, Gynecology, Obstetrics, Cardiology, Small Parts, Urology, Vascular, Pediatric, Musculoskeletal



## U60 Probe Selection



### C5-2B

**APPLICATION:** Abdomen, OB, Gynecology, Urology

**TRANSDUCER:** Convex

**BANDWIDTH (MHz):** 1.5-6.5 (-20dB), 2-6 MHz (-6dB)



### C352UB

**APPLICATION:** Abdomen, OB, Gynecology, Urology

**TRANSDUCER:** Convex

**BANDWIDTH (MHz):** 1.5-6.5 (-20dB), 2-6 (-6dB)



### L742UB

**APPLICATION:** Small Parts, Musculoskeletal, Vascular

**TRANSDUCER:** Linear

**BANDWIDTH (MHz):** 3-12 (-20dB), 5-10 (-6dB)



### L1042UB

**APPLICATION:** Small Parts, Musculoskeletal, Vascular

**TRANSDUCER:** Linear

**BANDWIDTH (MHz):** 4-15.5 (-20dB), 8-12 (-6dB)



### L552UB

**APPLICATION:** Musculoskeletal, Vascular

**TRANSDUCER:** Linear

**BANDWIDTH (MHz):** 2.5-8.5 (-20dB), 3.7-7.6 (-6dB)



### L15-7B

**APPLICATION:** Small Parts, Musculoskeletal, Vascular

**TRANSDUCER:** Linear

**BANDWIDTH (MHz):** 5-18.5 (-20dB), 7-16 (-6dB)



### C612UB

**APPLICATION:** Pediatric, Pediatric Cardiac

**TRANSDUCER:** Micro-Convex

**BANDWIDTH (MHz):** 3.5-12 (-20dB), 4.7-9.5 (-6dB)



### C6152UB

**APPLICATION:** Pediatric, Pediatric Cardiac

**TRANSDUCER:** Micro-Convex

**BANDWIDTH (MHz):** 3-10 (-20dB), 4.3-9.3 (-6dB)



### C422UB

**APPLICATION:** Abdomen, Cardiac, Pediatric

**TRANSDUCER:** Micro-Convex

**BANDWIDTH (MHz):** 2-7 (-20dB), 2.6-5.5 (-6dB)



### P5-1B

**APPLICATION:** Adult Cardiac

**TRANSDUCER:** Phased

**BANDWIDTH (MHz):** 1-5 (-20dB), 1.8-4.3 (-6dB)



### P5-1B

**APPLICATION:** Adult Cardiac

**TRANSDUCER:** Phased

**BANDWIDTH (MHz):** 1-5 (-20dB), 1.8-4.3 (-6dB)



### E612UB

**APPLICATION:** OB, Gynecology, Urology

**TRANSDUCER:** Endocavity

**BANDWIDTH (MHz):** 3-12 (-20dB), 5-8 (-6dB)

## Included Accessories

- Rechargeable Lithium-Ion Battery (14.8V, 5000mAh) — **01.21.064143**
- Power Cord (USA Standard) — **01.13.037122**
- Flash Disk (Netac, 4G, USB2.0 Protocol)
- Potential Equalization Conductor
- Carrying Case
- Ultrasound Gel (250g)

## Optional Accessories

- MT-805 Luxury Mobile Trolley — **MT-805.U60**
- SONY UP-X898MD, S-Video/USB interface. Black and white video graphic printer — **UP-X898MD**
- Sony UP-25MD, USB interface. Color and video printer — **UP-D25MD**

# Specifications

## PHYSICAL SPECIFICATION

Dimension:  
35 cm×37 cm×22 cm  
Weight: < 8.5 kg  
(Without probe and battery)

## DISPLAY

15 TFT LCD monitor  
Resolution: 1024 x 768  
Imaging field size : 640\*512  
Video out size: 800 \* 600  
Capture size:  
BMP, JPG, AVI, DCM 1024 \*  
768; FRM, CIN 640 \* 512  
View angle:  
Up 85 °  
Down 85 °  
Left 85 °  
Right 85 °

## BATTERY

Rechargeable lithium ion battery  
Capacity: 5000mAh  
Battery Life: 80 minutes  
Max charging time: 8 hours

## ELECTRICAL POWER

Voltage: 110V 240VAC  
Frequency: 50/60 Hz  
Power: 97.4w

## IMAGING STORAGE

500GB hard drive  
Storage:  
≤ 227,555 static images  
as BMP format (hard drive)  
Maximum Clip:  
B mode: 1227  
Color mode: 409  
M mode: 90  
PW/CW Doppler mode: 15

## IMAGING PARAMETERS

### B-mode

Image Type :  
Detail/Soft/HContrast/  
Penetration)  
Zoom:  
7 levels, x1.44, 96, x2.56,  
x4.0, x5.76, x9.0, x16.0  
(available on live state); 7  
levels: x1.31, x1.78, x2.56, x4.0,  
x7.11, x10.24, x16.0 (available  
on freeze state)  
Depth: 1.9 3 2 4 cm  
Frequency:  
2.0 15.0MHz  
eSRI: 0 8  
Rejection: 0-7  
Scan Angle : 0-3  
Gain: 0-13 0dB, 2 dB/step  
TGC: 8 segments

Dynamic Range:  
30-150 dB  
4 dB/step  
Scan Mode: Hiden/HiFR  
Max Frame rate : 244 f/s  
Map : 0-14  
Frame Persist: 0-7  
Focus Position: 0-15  
Focus Number: 1-4  
Pseudo color : 6 types  
H Reverse: On/Off  
V Reverse: On/Off  
90 rotation: 0/1/2/3  
B/W Invert: On/Off  
Spatial compounding:  
On/Off (max 3 angles)  
Display format:  
single(B),dual(B+B)  
Quad 4B: ( B, 2B, 4B)  
Center Line: On/Off

### M-mode

Sweep speed: 0-3  
Line Average : 0-7  
Gray Map : 0-14  
Pseudo Color : 6 types  
Gain: 0 13 0dB, 2 dB/step  
Frequency : 2.0 15.0MHz  
(3 fundamental and 2  
harmonic frequencies)  
Dynamic range:  
30-150 dB  
step 4 dB/step  
B/M Display : U/D, L/R

### Color Doppler

Flow Type : H Flow/M Flow/L Flow  
Dual live B/B+C  
ROI size/ position: adjustable  
ROI Color: Green, Yellow  
Frequency: 2.5-8.0 MHz  
Gain:  
1-80dB  
1dB/step  
Max Frame Rate : 38 f/s  
Persist: 0-7  
Smooth filter : 0-7  
Wall filter: 0-7  
Map: 0-7  
Angle Steer: 0°, ± 10°  
PRF: 16 levels 0.5-11 kHz  
Scale: 9-175 cm/s  
Baseline: 0-6  
Threshold: 0-15  
Invert: on/off  
Packet Size: 4 levels  
Flow Type : H Flow/M Flow/L Flow  
Dual Live: B/B+PDI  
Directional Power Doppler  
Imaging(DPDI)  
ROI size/ position: Adjustable

ROI Color: Green, Yellow  
Frequency: 2.5-8.0 MHz  
Gain: 1-80dB, 1dB/step  
Max Framerrate : 38 f/s  
Persist: 0-7  
S smooth filter : 0-7  
Wall filter: 0-7  
Map: 0-7  
Angle Steer: 0°, ± 10°  
Baseline: 0-6  
Threshold: 0-15  
Invert: on/off (available on DPDI)  
Packet Size: 4 levels

### Pulsed Wave Doppler

Flow Type : H Flow/M Flow/L Flow  
HPRF : On/Off  
Duplex and Triplex displays  
Frequency: 2.5-8.0 MHz  
PRF: 16 levels 1-15 kHz  
Gain: 1-80dB, 1dB/step  
Dynamic range: 30-90 dB, 2 dB/step  
Wall Filter: 0-3  
Sweep Speed:  
0(10.3 s), 1(7.95 s),  
2(5.19 s), 3(3.97 s),  
4(2.75 s), 5(1.53 s)  
Baseline: 0-6  
Correct Angle: -79°, 1° /step  
Quick Angle:  
-79°/-60°/-30°/0°/30°/60°/79°  
Steer: 0°, ± 10°  
Invert : On/Off  
Volume: 0-7  
Pseudo Color : 6 types  
Sample Volume :  
16 levels, 0.5-20 mm

### Continuous Wave Doppler

- Flow Type : H Flow/M Flow/L Flow  
- Frequency: 2.0 MHz  
- PRF: 0-32, 0.8 \-80KHz  
Gain: 1-80dB, 1dB/step  
Dynamic range: 30-90 dB, 2 dB/step  
Wall Filter: 0-3  
Sweep Speed:  
0(10.3 s), 1(7.95 s),  
2(5.19 s), 3(3.97 s),  
4(2.75 s), 5(1.53 s)  
Baseline: 0-6  
Correct Angle: -79°, 1° /step  
Quick Angle:  
-79°/-60°/-30°/0°/30°/60°/79°  
Invert : On/Off  
Volume: 0-7  
Pseudo Color : 6 types